

THOMPSON'S Compleat Collection of 200 FAVOURITE COUNTRY DANCES perform'd at
Court, Bath, Tunbridge & all Public Assemblies with proper Figures or Directions to each Tune
set for the Violin, German-Flute, & Hautboy. Pr. 3s. 6d.

VOLUME IV.

transcribed & edited by
Fynn Titford-Mock, 2006-9

IV. 1. The Lady of the Manor.

Two staves of musical notation for 'The Lady of the Manor'. The first staff is in treble clef, key of D major (two sharps), and 6/8 time. The second staff is in the same key and time signature. Both staves end with a double bar line and repeat dots.

IV. 2. The sham Fight.

Two staves of musical notation for 'The sham Fight'. The first staff is in treble clef, key of D major (two sharps), and 6/8 time. The second staff is in the same key and time signature. Both staves end with a double bar line and repeat dots.

IV. 3. The Innocent Maid.

Two staves of musical notation for 'The Innocent Maid'. The first staff is in treble clef, key of D major (two sharps), and 6/8 time. The second staff is in the same key and time signature. Both staves end with a double bar line and repeat dots.

IV. 4. The new Polones.

Two staves of musical notation for 'The new Polones'. The first staff is in treble clef, key of D major (two sharps), and 2/4 time. The second staff is in the same key and time signature. Both staves end with a double bar line and repeat dots.

IV. 5. The Camp.

Two staves of musical notation for 'The Camp'. The first staff is in treble clef, key of D major (two sharps), and 2/4 time. The second staff is in the same key and time signature. Both staves end with a double bar line and repeat dots.

IV. 6. Kingsbridge Assembly.

Two staves of musical notation for 'Kingsbridge Assembly'. The first staff begins with a treble clef, a key signature of one sharp (F#), and a 6/8 time signature. The melody consists of eighth and quarter notes. The second staff continues the melody with similar rhythmic patterns.

IV. 7. The Artillery Rout, or Hopkins Whim.

Two staves of musical notation for 'The Artillery Rout, or Hopkins Whim'. The first staff has a treble clef, one sharp key signature, and 6/8 time signature. It includes parts for 'G. Fl.' (Guitar Flute) and 'Vio.' (Violin). The second staff continues the piece with similar instrumentation.

IV. 8. The Beautiful Charmer.

Two staves of musical notation for 'The Beautiful Charmer'. The first staff features a treble clef, a key signature of one sharp, and a 6/8 time signature. The melody is primarily composed of eighth notes.

IV. 9. Trip to Easton.

Two staves of musical notation for 'Trip to Easton'. The first staff has a treble clef, one sharp key signature, and a 2/4 time signature. The second staff continues the melody with eighth notes.

IV. 10. La Brunetta or Pop the Question.

Two staves of musical notation for 'La Brunetta or Pop the Question'. The first staff has a treble clef, one sharp key signature, and a common time (C) signature. The second staff continues the melody with eighth notes.

IV. 11. The Doubtful Shepherd.

Two staves of musical notation for 'The Doubtful Shepherd'. The first staff has a treble clef, one sharp key signature, and a common time signature. It includes parts for 'G. Fl.' and 'Vio.'. The second staff continues the piece with similar instrumentation.

IV. 12. Patrick Sarffield, or New Lango Lee.

Two staves of musical notation for the dance 'Patrick Sarffield, or New Lango Lee'. The music is in 6/8 time and the key of D major (two sharps). The first staff contains the first eight measures, and the second staff contains the next eight measures, ending with a double bar line and repeat dots.

IV. 13. Keppel's Delight.

Two staves of musical notation for the dance 'Keppel's Delight'. The music is in 6/8 time and the key of D major. The first staff contains the first eight measures, and the second staff contains the next eight measures, ending with a double bar line and repeat dots.

IV. 14. The first of April.

Two staves of musical notation for the dance 'The first of April'. The music is in 6/8 time and the key of D major. The first staff contains the first eight measures, and the second staff contains the next eight measures, ending with a double bar line and repeat dots.

IV. 15. The Harriot.

Two staves of musical notation for the dance 'The Harriot'. The music is in 2/4 time and the key of D major. The first staff contains the first eight measures, and the second staff contains the next eight measures, ending with a double bar line and repeat dots.

IV. 16. Hey ding a ding.

Two staves of musical notation for the dance 'Hey ding a ding'. The music is in 12/8 time and the key of D major. The first staff contains the first eight measures, and the second staff contains the next eight measures, ending with a double bar line and repeat dots.

IV. 17. We will down with the French.

Two staves of musical notation for the dance 'We will down with the French'. The music is in 6/8 time and the key of D major. The first staff contains the first eight measures, and the second staff contains the next eight measures, ending with a double bar line and repeat dots.

IV. 18. Falmouth Assembly.

IV. 19. The Installation.

IV. 20. Le Pulleys Allmand.

IV. 21. The Touchstone.

** orig. E. C#.

IV. 22. The Victory.

IV. 23. The new Allemand

IV. 24. Peggy of the Green.

Two staves of musical notation for 'Peggy of the Green'. The first staff begins with a treble clef, a key signature of two sharps (F# and C#), and a 2/4 time signature. The melody consists of eighth and sixteenth notes. The second staff continues the melody with similar rhythmic patterns and includes repeat signs at the beginning and end.

IV. 25. Bromley Bells

Two staves of musical notation for 'Bromley Bells'. The first staff starts with a treble clef, a key signature of one sharp (F#), and a common time signature (C). It features several trills marked with 'tr'. The second staff continues the piece with various rhythmic figures and repeat signs.

IV. 26. The Rainbow

Two staves of musical notation for 'The Rainbow'. The first staff uses a treble clef, a key signature of one sharp (F#), and a common time signature (C). It includes a trill marked 'tr'. The second staff continues the melody with repeat signs and various note values.

IV. 27. Once a Night

Three staves of musical notation for 'Once a Night'. The first staff is in 6/8 time with a treble clef and a key signature of one flat (Bb). The second and third staves continue the piece, featuring trills marked 'tr' and various rhythmic patterns.

IV. 28. The Dove House

Two staves of musical notation for 'The Dove House'. The first staff is in 6/8 time with a treble clef and a key signature of two sharps (F# and C#). The second staff continues the melody and includes two triplet markings over eighth notes.

IV. 29. The Wedding Ring

Three staves of musical notation for 'The Wedding Ring'. The first staff is the melody in G minor, 2/4 time. The second staff is a second part of the melody. The third staff is the bass line, featuring a prominent eighth-note accompaniment.

IV. 30. The Recruits

Two staves of musical notation for 'The Recruits'. The first staff is the melody in G major, 2/4 time. The second staff is the bass line, featuring a steady eighth-note accompaniment.

IV. 31. The French Assembly

Three staves of musical notation for 'The French Assembly'. The first staff is the melody in D major, 3/8 time. The second and third staves are the bass line, featuring a steady eighth-note accompaniment.

IV. 32. Cranford lodge

Two staves of musical notation for 'Cranford lodge'. The first staff is the melody in D major, 9/8 time. The second staff is the bass line, featuring a steady eighth-note accompaniment.

IV. 33. The Fandango

Two staves of musical notation for 'The Fandango'. The first staff is the melody in D major, 6/8 time. The second staff is the bass line, featuring a steady eighth-note accompaniment.

IV. 34. Miss Hamiltons Reel

Two staves of musical notation for 'Miss Hamiltons Reel'. The first staff is the melody in D major, C time. The second staff is the bass line, featuring a steady eighth-note accompaniment.

IV. 35. The Frisky

Musical notation for 'The Frisky' in 6/8 time, key of D major. It consists of two staves. The first staff contains the melody with a repeat sign and a first ending. The second staff contains the accompaniment, also with a repeat sign and a first ending.

IV. 36. The dress'd Ship

Musical notation for 'The dress'd Ship' in 6/8 time, key of D major. It consists of two staves. The first staff contains the melody with a repeat sign and a first ending. The second staff contains the accompaniment, also with a repeat sign and a first ending.

IV. 37. La Nouvelle Hambourg

Musical notation for 'La Nouvelle Hambourg' in 2/4 time, key of D major. It consists of four staves. The first two staves show the melody and accompaniment with a repeat sign and first ending. The last two staves show the melody and accompaniment with a key signature change to B minor and a repeat sign and first ending.

IV. 38. Portsmouth Review

Musical notation for 'Portsmouth Review' in 6/8 time, key of D major. It consists of two staves. The first staff contains the melody with a repeat sign and a first ending. The second staff contains the accompaniment, also with a repeat sign and a first ending.

IV. 39. The merry Hunters.

Musical notation for 'The merry Hunters.' in 2/4 time, key of D major. It consists of two staves. The first staff contains the melody with a trill (tr) and a repeat sign and first ending. The second staff contains the accompaniment with a repeat sign and first ending.

IV. 40. The Queen's Night Cap.

Musical notation for 'The Queen's Night Cap.' in 2/4 time, key of D major. It consists of two staves. The first staff contains the melody with a trill (tr) and a repeat sign and first ending. The second staff contains the accompaniment with a trill (tr) and a repeat sign and first ending.

IV. 41. The Royal salute

Musical notation for 'The Royal salute' in G major, 2/4 time. It consists of two staves of music. The first staff begins with a treble clef, a key signature of two sharps (F# and C#), and a common time signature. The melody features eighth and sixteenth notes with various rests. The second staff continues the melody, ending with a double bar line and repeat dots.

IV. 42. Justice Ballance

Musical notation for 'Justice Ballance' in G major, 2/4 time. It consists of three staves of music. The first staff begins with a treble clef, a key signature of two sharps, and a common time signature. The melody is primarily composed of eighth notes. The second and third staves continue the piece, with the third staff ending with a double bar line and repeat dots.

IV. 43. The Boot

Musical notation for 'The Boot' in G major, 2/4 time. It consists of two staves of music. The first staff begins with a treble clef, a key signature of two sharps, and a 2/4 time signature. The melody features dotted rhythms and includes a trill (tr) over a note. The second staff continues the melody, ending with a double bar line and repeat dots.

IV. 44. Polly Clevelands Favorite.

Musical notation for 'Polly Clevelands Favorite' in G major, 2/4 time. It consists of two staves of music. The first staff begins with a treble clef, a key signature of two sharps, and a 2/4 time signature. The melody includes a trill (tr) over a note. The second staff continues the melody, also featuring a trill, and ends with a double bar line and repeat dots.

IV. 45. The Lasses of Portsmouth

Musical notation for 'The Lasses of Portsmouth' in G minor, 2/4 time. It consists of three staves of music. The first staff begins with a treble clef, a key signature of two flats (F and C), and a common time signature. The melody includes several trills (tr). The second and third staves continue the piece, with the third staff ending with a double bar line and repeat dots.

IV. 46. Maccaronny Dance

Musical notation for 'Maccaronny Dance' in G major, 6/8 time. It consists of two staves of music. The first staff begins with a treble clef, a key signature of two sharps, and a 6/8 time signature. The melody is characterized by a steady eighth-note rhythm. The second staff continues the melody, ending with a double bar line and repeat dots.

IV. 47. Miss Molly's Gigg.

IV. 48. May day Morn.

IV. 49. Don Quicksot

IV. 50. The Alderman's Hat

IV. 51. The new Years Gift

IV. 52. A Trip to Milan

IV. 53. The four Seasons

Musical score for 'The four Seasons' in G major, 6/8 time. The piece consists of four staves of music. The first staff contains the main melody. The second staff features a rhythmic accompaniment with a repeat sign. The third and fourth staves continue the melody and accompaniment respectively, both ending with repeat signs.

IV. 54. New Lango Lee

Musical score for 'New Lango Lee' in G major, 6/8 time. The piece consists of two staves of music. The first staff contains the main melody. The second staff features a rhythmic accompaniment with a repeat sign.

IV. 55. Trip to Castle Howard

Musical score for 'Trip to Castle Howard' in G major, common time. The piece consists of three staves of music. The first staff contains the main melody. The second and third staves feature a rhythmic accompaniment with repeat signs.

IV. 56. The Oak's

Musical score for 'The Oak's' in G major, 2/4 time. The piece consists of one staff of music with a repeat sign.

IV. 57. The Bonny Sailor.

Musical score for 'The Bonny Sailor.' in G major, 6/8 time. The piece consists of two staves of music. The first staff contains the main melody. The second staff features a rhythmic accompaniment with a repeat sign.

IV. 58. Lloyd's Whim

Two staves of music for 'Lloyd's Whim'. The first staff is in treble clef, 2/4 time, with a key signature of one sharp (F#). The second staff is in treble clef, 2/4 time, with a key signature of one sharp (F#). The music consists of eighth and sixteenth notes.

IV. 59. The Rival Milk Maids

Two staves of music for 'The Rival Milk Maids'. The first staff is in treble clef, 6/8 time, with a key signature of one sharp (F#). The second staff is in treble clef, 6/8 time, with a key signature of one sharp (F#). The music features a mix of eighth and sixteenth notes.

IV. 60. Trip to Gallaway

Two staves of music for 'Trip to Gallaway'. The first staff is in treble clef, common time (C), with a key signature of two sharps (F# and C#). The second staff is in treble clef, common time (C), with a key signature of two sharps (F# and C#). The music is primarily composed of eighth notes.

IV. 61. The Dairy Maid

Two staves of music for 'The Dairy Maid'. The first staff is in treble clef, 6/8 time, with a key signature of two flats (Bb and Eb). The second staff is in treble clef, 6/8 time, with a key signature of two flats (Bb and Eb). The music consists of eighth and sixteenth notes.

IV. 62. The Cozeners

Two staves of music for 'The Cozeners'. The first staff is in treble clef, common time (C), with a key signature of two flats (Bb and Eb). It includes trills marked 'tr'. The second staff is in treble clef, common time (C), with a key signature of two flats (Bb and Eb). It includes an asterisk marking '*' above a note.

* orig. Eb

IV. 63. Gramackree Molly

IV. 63. Gramackree Molly

Two staves of music in G major (one sharp) and common time (C). The first staff contains the main melody with a repeat sign at the end. The second staff provides a rhythmic accompaniment with a repeat sign at the end. The piece concludes with a trill (tr) on the final note of the second staff.

IV. 64. The Wonder

IV. 64. The Wonder

Two staves of music in G major (one sharp) and 2/4 time. The first staff contains the main melody with a repeat sign at the end. The second staff provides a rhythmic accompaniment with trills (tr) on the first and third notes of several measures, and a repeat sign at the end.

IV. 65. Nancy's frolick

IV. 65. Nancy's frolick

Two staves of music in G major (one sharp) and 6/8 time. The first staff contains the main melody with a repeat sign at the end. The second staff provides a rhythmic accompaniment with a repeat sign at the end.

IV. 66. A trip to Virginia

IV. 66. A trip to Virginia

Two staves of music in G major (one sharp) and common time (C). The first staff contains the main melody with a repeat sign at the end. The second staff provides a rhythmic accompaniment with a repeat sign at the end.

IV. 67. Mrs. Hubbard's Allemand

IV. 67. Mrs. Hubbard's Allemand

Four staves of music in G major (one sharp) and 2/4 time. The first two staves contain the main melody with a repeat sign at the end. The third staff is marked *P.* (Piano) and the fourth staff is marked *for.* (for). Both the third and fourth staves contain a rhythmic accompaniment with a repeat sign at the end.

IV. 68. Lady Villier's delight

Two staves of musical notation for 'Lady Villier's delight'. The first staff begins with a treble clef, a key signature of one sharp (F#), and a 3/8 time signature. It features a triplet of eighth notes in the first measure. The second staff continues the melody with various rhythmic patterns and a repeat sign at the end.

IV. 69. The Committee

Two staves of musical notation for 'The Committee'. The first staff is in a treble clef with a key signature of one flat (Bb) and a 6/8 time signature. The melody consists of eighth and sixteenth notes. The second staff continues the piece, ending with a repeat sign.

IV. 70. Woodford Assembly

Two staves of musical notation for 'Woodford Assembly'. The first staff is in a treble clef with a key signature of two sharps (F# and C#) and a 6/8 time signature. It includes a trill (tr) in the second staff. The piece concludes with a repeat sign.

IV. 71. Mullowny's Jigg

Two staves of musical notation for 'Mullowny's Jigg'. The first staff is in a treble clef with a key signature of two sharps (F# and C#) and a 6/8 time signature. The melody is characterized by eighth and sixteenth notes. The second staff continues the piece, ending with a repeat sign.

IV. 72. La Foes Allemand

Two staves of musical notation for 'La Foes Allemand'. The first staff is in a treble clef with a key signature of two sharps (F# and C#) and a 2/4 time signature. It features a trill (tr) in the second staff. The piece ends with a repeat sign.

IV. 73. Guardian Angels

Three staves of musical notation for 'Guardian Angels'. The first staff is in a treble clef with a key signature of three sharps (F#, C#, and G#) and a 6/8 time signature. The melody is composed of eighth and sixteenth notes. The second and third staves continue the piece, with the second staff featuring a repeat sign.

IV. 74. Miss Tashis Maggot

Two staves of musical notation for 'Miss Tashis Maggot'. The first staff is in treble clef, key of D major (two sharps), and 2/4 time. It features a melody with eighth and sixteenth notes, including a trill (tr) on the final note. The second staff is a repeat of the first, starting with a repeat sign.

IV. 75. The Feathers

Four staves of musical notation for 'The Feathers'. The first staff is in treble clef, key of B-flat major (two flats), and 2/4 time. It features a melody with eighth and sixteenth notes, including a trill (tr) on the final note. The second staff is a repeat of the first, starting with a repeat sign. The third staff continues the melody with eighth and sixteenth notes. The fourth staff is a repeat of the third, starting with a repeat sign and including first and second endings (1. and 2.).

IV. 76. The Liberal Lover

Two staves of musical notation for 'The Liberal Lover'. The first staff is in treble clef, key of D major (two sharps), and 2/4 time. It features a melody with eighth and sixteenth notes. The second staff is a repeat of the first, starting with a repeat sign.

IV. 77. The Royal Dozen

Three staves of musical notation for 'The Royal Dozen'. The first staff is in treble clef, key of D major (two sharps), and 2/4 time. It features a melody with eighth and sixteenth notes. The second staff is a repeat of the first, starting with a repeat sign. The third staff is a repeat of the second, starting with a repeat sign.

IV. 78. Fete Champetre

Two staves of musical notation for 'Fete Champetre'. The first staff begins with a treble clef, a key signature of one sharp (F#), and a 6/8 time signature. The melody consists of eighth and sixteenth notes. The second staff continues the melody with similar rhythmic patterns.

IV. 79. The Adieu

Four staves of musical notation for 'The Adieu'. The first staff has a treble clef, a key signature of two flats (Bb, Eb), and a 2/4 time signature. The melody features eighth and sixteenth notes. The second staff continues the melody. The third staff shows a change in rhythm with dotted eighth and sixteenth notes. The fourth staff concludes the piece with a trill (tr) over a final note.

IV. 80. Now or Never

Two staves of musical notation for 'Now or Never'. The first staff has a treble clef, a key signature of two sharps (F#, C#), and a 2/4 time signature. The melody is composed of eighth and sixteenth notes. The second staff continues the melody with similar rhythmic patterns.

IV. 81. The Jolly young Waterman

Two staves of musical notation for 'The Jolly young Waterman'. The first staff has a treble clef, a key signature of three sharps (F#, C#, G#), and a 6/8 time signature. The melody consists of eighth and sixteenth notes. The second staff continues the melody with similar rhythmic patterns.

IV. 82. Hook or by Crook

Two staves of musical notation for 'Hook or by Crook'. The first staff has a treble clef, a key signature of one sharp (F#), and a 6/8 time signature. The melody consists of eighth and sixteenth notes. The second staff continues the melody with similar rhythmic patterns.

IV. 83. The Fair Maid of the Inn

IV. 83. The Fair Maid of the Inn

Three staves of music in G minor, 2/4 time. The first staff contains the main melody. The second staff features a trill (tr) on the second measure. The piece concludes with a double bar line and repeat dots.

IV. 84. Who Cares for You

IV. 84. Who Cares for You

Two staves of music in G major, 2/4 time. The first staff contains the main melody. The piece concludes with a double bar line and repeat dots.

IV. 85. The Milk Maid.

IV. 85. The Milk Maid.

Three staves of music in G major, 6/8 time. The first staff contains the main melody. The piece concludes with a double bar line and repeat dots.

IV. 85. La Contess.

IV. 85. La Contess.

Three staves of music in G minor, 2/4 time. The first staff contains the main melody. The piece concludes with a double bar line and repeat dots.

IV. 87. The Comical Fellow.

IV. 87. The Comical Fellow.

Three staves of music in G major, 6/8 time. The first staff contains the main melody. The piece concludes with a double bar line and repeat dots.

IV. 88. St. John's Day or Parson Darrals Fancy.

IV. 89. The Sicilian Peasant.

IV. 90. Harlequin in the Woods.

IV. 91. The Volatile.

IV. 92. Wenlock Election.

IV. 93. The Regatta.

Two staves of musical notation for 'The Regatta'. The first staff is in treble clef, key of D major (two sharps), and 6/8 time. The second staff is in treble clef, key of D major, and 2/4 time. Both staves end with a double bar line and repeat dots.

IV. 94. Marione.

Two staves of musical notation for 'Marione'. The first staff is in treble clef, key of D major, and 2/4 time. The second staff is in treble clef, key of D major, and 2/4 time, featuring a trill (tr) on the final note. Both staves end with a double bar line and repeat dots.

IV. 95. The Parting Lovers.

Three staves of musical notation for 'The Parting Lovers'. The first staff is in treble clef, key of D major, and 6/8 time. The second and third staves are in treble clef, key of D major, and 2/4 time. All staves end with a double bar line and repeat dots.

IV. 96. Brosely Assembly.

One staff of musical notation for 'Brosely Assembly' in treble clef, key of D major, and common time (C). The staff ends with a double bar line and repeat dots.

IV. 97. O the Days when I was young

Two staves of musical notation for 'O the Days when I was young'. The first staff is in treble clef, key of D major, and common time. The second staff is in treble clef, key of D major, and common time. Both staves end with a double bar line and repeat dots.

IV. 98. La Contrefatte

Two staves of musical notation for 'La Contrefatte'. The first staff begins with a treble clef, a key signature of one sharp (F#), and a 6/8 time signature. The melody consists of eighth and sixteenth notes. The second staff continues the melody with similar rhythmic patterns and includes repeat signs at the beginning and end.

IV. 99. Hunt the Hare

Two staves of musical notation for 'Hunt the Hare'. The first staff has a treble clef, a key signature of one sharp (F#), and a 6/8 time signature. The melody features a mix of eighth and sixteenth notes. The second staff continues the piece, including a repeat sign and ending with a double bar line.

IV. 100. Cupids Frolic

Two staves of musical notation for 'Cupids Frolic'. The first staff has a treble clef, a key signature of two sharps (F# and C#), and a 2/4 time signature. The melody is characterized by frequent trills, indicated by 'tr' above notes. The second staff continues the piece with more trills and includes repeat signs.

IV. 101. The Duenna

Three staves of musical notation for 'The Duenna'. The first staff has a treble clef, a key signature of one sharp (F#), and a 6/8 time signature. The melody is composed of eighth and sixteenth notes. The second and third staves continue the piece, featuring repeat signs and ending with a double bar line.

IV. 102. Bath Carnival

Two staves of musical notation for 'Bath Carnival'. The first staff has a treble clef, a key signature of one sharp (F#), and a 6/8 time signature. The melody is primarily composed of eighth notes. The second staff continues the piece with repeat signs and ends with a double bar line.

IV. 103. The Dusky Night.

Musical score for 'The Dusky Night' in G major, 6/8 time. The piece consists of two staves of music. The first staff contains the first line of the melody, and the second staff contains the second line. The music features a mix of eighth and sixteenth notes, with some triplet-like rhythms. The key signature has one sharp (F#), and the time signature is 6/8.

IV. 104. The Pleasures of the Town

Musical score for 'The Pleasures of the Town' in B-flat major, common time (C). The piece consists of three staves of music. The first staff contains the first line, the second staff the second line, and the third staff the third line. The music is characterized by a steady eighth-note pattern with occasional sixteenth-note runs. Trills (tr) are indicated above several notes in the second and third staves. The key signature has two flats (Bb, Eb), and the time signature is common time.

IV. 105. La Petite

Musical score for 'La Petite' in G major, 6/8 time. The piece consists of two staves of music. The first staff contains the first line, and the second staff contains the second line. The melody is simple and features a mix of eighth and sixteenth notes. The key signature has one sharp (F#), and the time signature is 6/8.

IV. 106. Mr. Mellish's Dance

Musical score for 'Mr. Mellish's Dance' in G major, 2/4 time. The piece consists of two staves of music. The first staff contains the first line, and the second staff contains the second line. The music is a dance tune with a strong eighth-note rhythm. The key signature has one sharp (F#), and the time signature is 2/4.

IV. 107. The Wheatshaf

Musical score for 'The Wheatshaf' in G major, 2/4 time. The piece consists of two staves of music. The first staff contains the first line, and the second staff contains the second line. The music features a mix of eighth and sixteenth notes, with trills (tr) indicated above several notes. The key signature has one sharp (F#), and the time signature is 2/4.

IV. 108. The happy Captive

Two staves of musical notation for 'The happy Captive'. The key signature is two sharps (F# and C#) and the time signature is 2/4. The melody is written on the first staff, and the accompaniment is on the second. The piece consists of two measures, each ending with a double bar line and repeat dots.

IV. 109. Bon Ton

Two staves of musical notation for 'Bon Ton'. The key signature is two sharps (F# and C#) and the time signature is 2/4. The melody is written on the first staff, and the accompaniment is on the second. Trills (tr) are indicated above certain notes in both staves. The piece consists of two measures, each ending with a double bar line and repeat dots.

IV. 110. The Spaniard

Two staves of musical notation for 'The Spaniard'. The key signature is one sharp (F#) and the time signature is 6/8. The melody is written on the first staff, and the accompaniment is on the second. The piece consists of two measures, each ending with a double bar line and repeat dots.

IV. 111. Mutual Love

Three staves of musical notation for 'Mutual Love'. The key signature is one flat (Bb) and the time signature is 6/8. The melody is written on the first staff, and the accompaniment is on the second and third staves. The piece consists of two measures, each ending with a double bar line and repeat dots.

IV. 112. Love & Opportunity

One staff of musical notation for 'Love & Opportunity'. The key signature is one flat (Bb) and the time signature is 6/8. The melody is written on the staff. The piece consists of two measures, each ending with a double bar line and repeat dots.

IV. 113. The Cassino

Three staves of musical notation for 'The Cassino'. The key signature is one flat (Bb) and the time signature is 6/8. The melody is written on the first staff, and the accompaniment is on the second and third staves. The piece consists of two measures, each ending with a double bar line and repeat dots.

IV. 114. The Corporation

Musical notation for 'The Corporation' in treble clef, 2/4 time, key of D major. The piece consists of three staves of music. The first staff contains the first line of the melody. The second staff contains the second line, including a trill (tr) on the final note of the first phrase. The third staff contains the third line, also ending with a trill (tr) on the final note. The piece concludes with a double bar line and repeat dots.

IV. 115. Lord How's Jigg

Musical notation for 'Lord How's Jigg' in treble clef, 6/8 time, key of D major. The piece consists of two staves of music. The first staff contains the first line of the melody. The second staff contains the second line, which includes a repeat sign at the beginning and ends with a double bar line and repeat dots.

IV. 116. A Trip to Dublin

Musical notation for 'A Trip to Dublin' in treble clef, 6/8 time, key of D major. The piece consists of two staves of music. The first staff contains the first line of the melody. The second staff contains the second line, which includes a repeat sign at the beginning and ends with a double bar line and repeat dots.

IV. 117. Jacks Ramble

Musical notation for 'Jacks Ramble' in treble clef, 6/8 time, key of D major. The piece consists of two staves of music. The first staff contains the first line of the melody. The second staff contains the second line, which includes a repeat sign at the beginning and ends with a double bar line and repeat dots.

IV. 118. Trip to Highgate

Musical notation for 'Trip to Highgate' in treble clef, 6/8 time, key of D major. The piece consists of two staves of music. The first staff contains the first line of the melody. The second staff contains the second line, which includes a repeat sign at the beginning and ends with a double bar line and repeat dots.

IV. 119. A Trip to Bath Easton

Two staves of musical notation for 'A Trip to Bath Easton'. The first staff begins with a treble clef, a key signature of one sharp (F#), and a 2/4 time signature. The melody consists of eighth and sixteenth notes. The second staff continues the melody with repeat signs at the beginning and end.

IV. 120. Colins Serenade

Two staves of musical notation for 'Colins Serenade'. The first staff begins with a treble clef, a key signature of two sharps (F# and C#), and a 2/4 time signature. The melody features a mix of eighth and sixteenth notes. The second staff continues the melody with repeat signs at the beginning and end.

IV. 121. The Christmas Tale

Two staves of musical notation for 'The Christmas Tale'. The first staff begins with a treble clef, a key signature of one sharp (F#), and a 6/8 time signature. The melody is primarily composed of eighth notes. The second staff continues the melody with repeat signs at the beginning and end.

IV. 122. A School for Scandal

Three staves of musical notation for 'A School for Scandal'. The first staff begins with a treble clef, a key signature of one sharp (F#), and a common time (C) signature. The melody consists of eighth and sixteenth notes. The second and third staves continue the melody with repeat signs at the beginning and end.

IV. 123. The Salloon

One staff of musical notation for 'The Salloon'. It begins with a treble clef, a key signature of two sharps (F# and C#), and a 6/8 time signature. The melody is primarily composed of eighth notes and includes repeat signs at the beginning and end.

IV. 124. The Rose



IV. 125. The Free Mason



IV. 126. The Graces



IV. 127. The Merry Meeting



IV. 128. He stole my Tender Heart away

Musical notation for IV. 128. He stole my Tender Heart away. The piece is in 2/4 time with a key signature of one sharp (F#). It consists of three staves of music. The first staff begins with a treble clef and a key signature of one sharp. The melody features eighth and sixteenth notes, with a repeat sign at the end of the first line. The second and third staves continue the melody and include various rhythmic patterns and rests.

IV. 129. Le Fete du Village

Musical notation for IV. 129. Le Fete du Village. The piece is in 2/4 time with a key signature of three sharps (F#, C#, G#). It consists of two staves of music. The first staff begins with a treble clef and a key signature of three sharps. The melody is characterized by frequent sixteenth-note runs. The second staff continues the piece with similar rhythmic patterns.

IV. 130. The Rosetta

Musical notation for IV. 130. The Rosetta. The piece is in 6/8 time with a key signature of one sharp (F#). It consists of two staves of music. The first staff begins with a treble clef and a key signature of one sharp. The melody is composed of eighth and sixteenth notes. The second staff continues the melody with a repeat sign at the end.

IV. 131. Trip to Oatlands

Musical notation for IV. 131. Trip to Oatlands. The piece is in 6/8 time with a key signature of one sharp (F#). It consists of two staves of music. The first staff begins with a treble clef and a key signature of one sharp. The melody features eighth and sixteenth notes. The second staff continues the piece and includes trill ornaments (tr.) over certain notes.

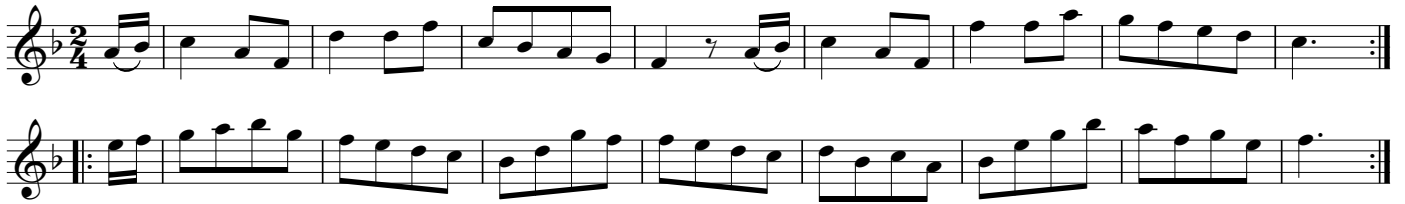
IV. 132. The Bird Catchers

Musical notation for IV. 132. The Bird Catchers. The piece is in 2/4 time with a key signature of one sharp (F#). It consists of two staves of music. The first staff begins with a treble clef and a key signature of one sharp. The melody is primarily composed of eighth and sixteenth notes. The second staff continues the melody with a repeat sign at the end.

IV. 133. Trip to the Oaks

Musical notation for IV. 133. Trip to the Oaks. The piece is in 2/4 time with a key signature of one sharp (F#). It consists of two staves of music. The first staff begins with a treble clef and a key signature of one sharp. The melody features eighth and sixteenth notes. The second staff continues the piece with a repeat sign at the end.

IV. 134. The Green Park



IV. 135. The Hive Bonnet



IV. 136. The Frog & Mouse



IV. 137. Ye Social Pow'rs



IV. 138. He's aye a Kissing me



IV. 139. The Ton



IV. 140. Newport Assembly

Two staves of musical notation for the dance 'Newport Assembly'. The first staff begins with a treble clef, a key signature of one sharp (F#), and a 2/4 time signature. It contains a melody with two triplet markings. The second staff continues the melody, also featuring two triplet markings. Both staves end with a double bar line and repeat dots.

IV. 141. Ticonderoga

Three staves of musical notation for the dance 'Ticonderoga'. The first staff has a treble clef, a key signature of one sharp (F#), and a 2/4 time signature. The melody is characterized by continuous eighth-note patterns. The second and third staves continue this rhythmic pattern, with the third staff ending with a double bar line and repeat dots.

IV. 142. Who's afraid

Two staves of musical notation for the dance 'Who's afraid'. The first staff has a treble clef, a key signature of one flat (Bb), and a 6/8 time signature. The melody consists of quarter and eighth notes. The second staff continues the melody and ends with a double bar line and repeat dots.

IV. 143. The Milesian

Two staves of musical notation for the dance 'The Milesian'. The first staff has a treble clef, a key signature of two flats (Bb, Eb), and a 2/4 time signature. The melody features a mix of quarter and eighth notes. The second staff continues the melody and ends with a double bar line and repeat dots.

IV. 144. The Bishop

Two staves of musical notation for the dance 'The Bishop'. The first staff has a treble clef, a key signature of one sharp (F#), and a 6/8 time signature. The melody is composed of quarter and eighth notes. The second staff continues the melody and ends with a double bar line and repeat dots.

IV. 145. Warley Common.



IV. 146. The Myrtle.



IV. 147. The Flight.



IV. 148. Lady Charles Spencers Fancy.



IV. 149. The Barley Mow.



IV. 150. The Runaway.



IV. 151. Jacksons Morning Brush.

IV. 152. Linnen Hall.

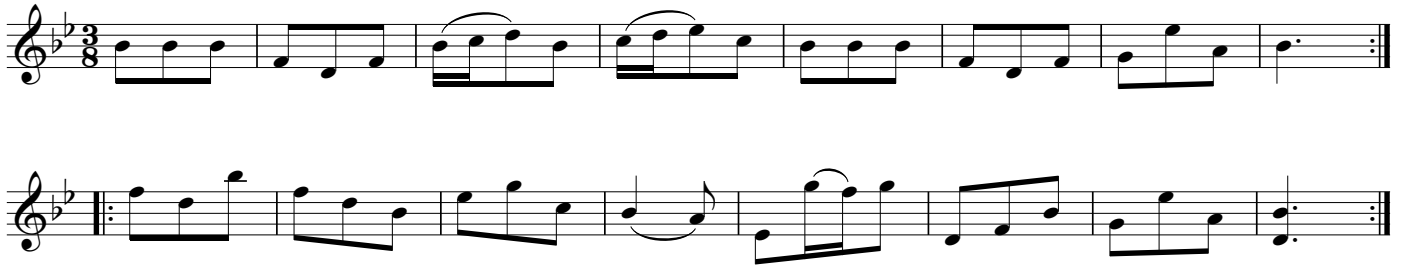
Da Capo

IV. 153. The Handsome Couple.

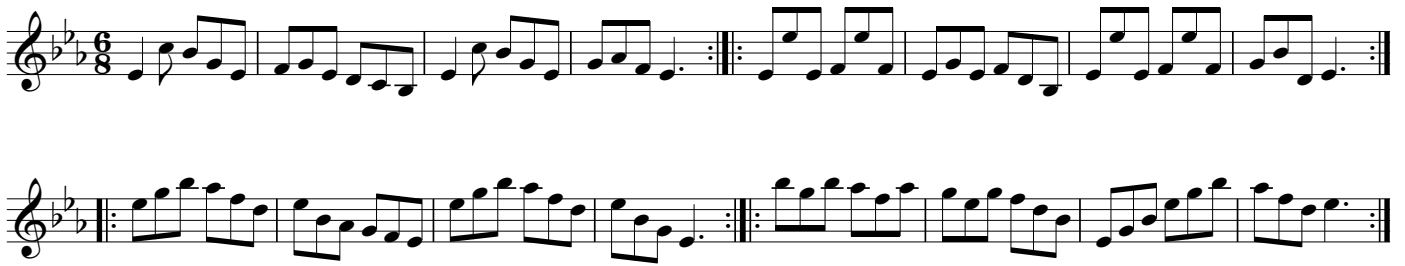
IV. 154. A Trip to the Camp.

IV. 155. Wakefield Hunt.

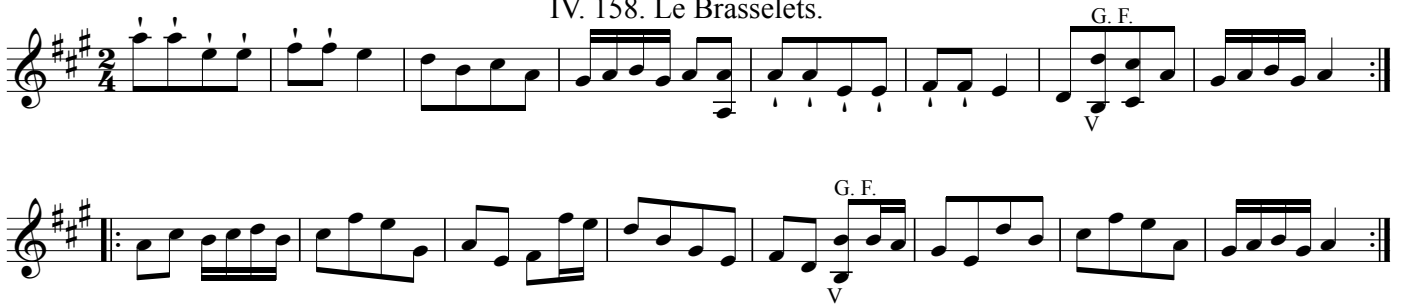
IV. 156. The Grove.



IV. 157. The Willing Quaker.



IV. 158. Le Brasselets.



IV. 159. Greenwich Park.



IV. 160. Lady Mary Worsleys Fancy.



IV. 161. La Boutonniere.

IV. 162. Lady Barnsleys Fancy.

IV. 163. La Rose.

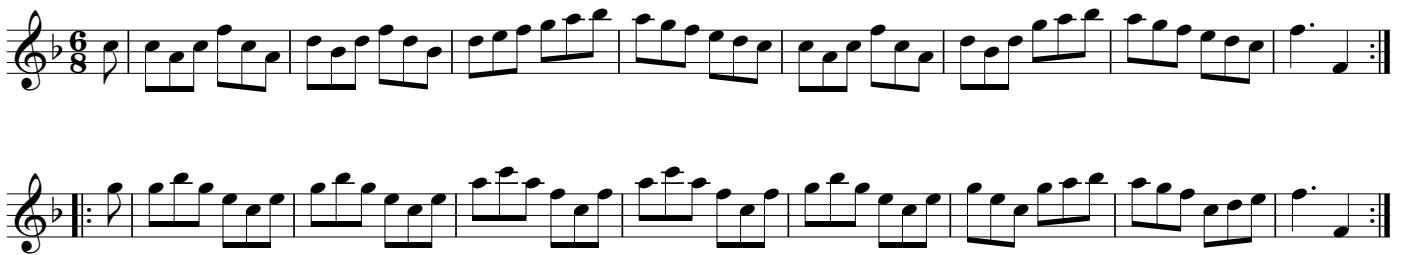
IV. 164. The new Fandango.

IV. 165. The Seven Stars.

IV. 166. Cox Heath.



IV. 167. The Female Fox Hunter.



IV. 168. The Tartar.



IV. 169. Love me Dearly



IV. 170. The Royal Prince Frederick



IV. 171. The merry Girl of Bristol

Three staves of musical notation for 'The merry Girl of Bristol'. The first staff is in treble clef, 2/4 time, with a key signature of one sharp (F#). The second and third staves are in the same key signature and time signature, with repeat signs at the beginning of each line.

IV. 172. You're welcome to Broadstreet

Two staves of musical notation for 'You're welcome to Broadstreet'. The first staff is in treble clef, common time (C), with a key signature of one sharp (F#). The second staff is in the same key signature and time signature, with a repeat sign at the beginning.

IV. 173. Love sick Polly

Three staves of musical notation for 'Love sick Polly'. The first staff is in treble clef, common time (C), with a key signature of one sharp (F#). The second and third staves are in the same key signature and time signature, with trills (tr) indicated above certain notes.

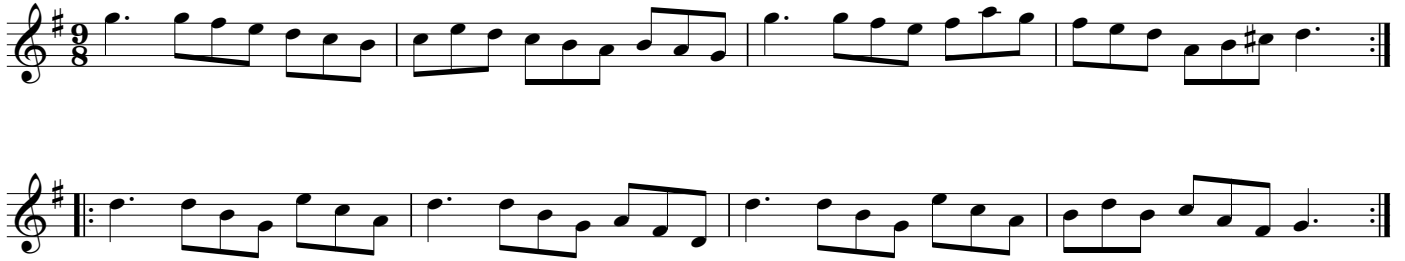
IV. 174. Powell's Fancy

Two staves of musical notation for 'Powell's Fancy'. The first staff is in treble clef, 9/8 time, with a key signature of one flat (Bb). The second staff is in the same key signature and time signature, with a repeat sign at the beginning.

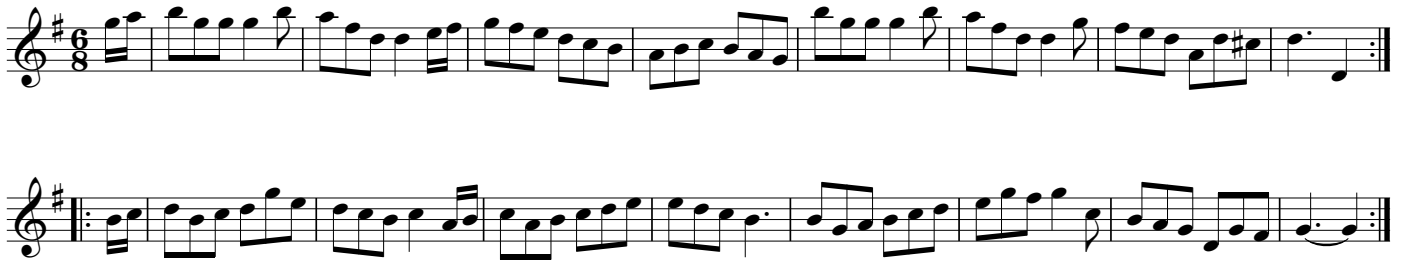
IV. 175. Miss Neighbours Fancy

Three staves of musical notation for 'Miss Neighbours Fancy'. The first staff is in treble clef, 6/8 time, with a key signature of one sharp (F#). The second and third staves are in the same key signature and time signature, with a repeat sign at the beginning of the second staff.

IV. 176. Miss Lamberts Delight



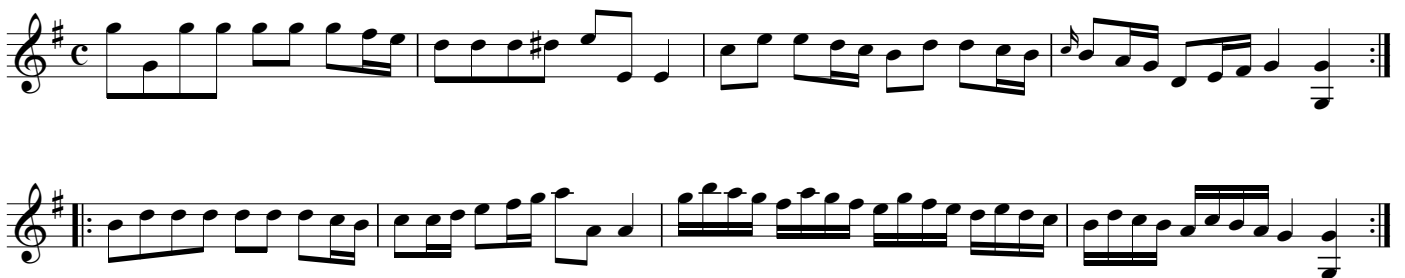
IV. 177. Two for One



IV. 178. You may if you Please



IV. 179. The Wanton Lass



IV. 180. The Shrewsbury Lasses



IV. 181. Chatsworth

Two staves of musical notation for 'Chatsworth'. The first staff begins with a treble clef, a key signature of one sharp (F#), and a 6/8 time signature. The melody consists of eighth and sixteenth notes. The second staff continues the melody with similar rhythmic patterns and includes some slurs.

IV. 182. Lasses have at ye

Two staves of musical notation for 'Lasses have at ye'. The first staff begins with a treble clef, a key signature of one sharp (F#), and a 6/8 time signature. The melody features a mix of eighth and sixteenth notes. The second staff continues the piece with various rhythmic figures and slurs.

IV. 183. A Trip to Bengall

Two staves of musical notation for 'A Trip to Bengall'. The first staff begins with a treble clef, a key signature of one sharp (F#), and a 2/4 time signature. The melody is primarily composed of quarter notes. The second staff includes trills (tr) over certain notes.

IV. 184. Garricks Rout

Two staves of musical notation for 'Garricks Rout'. The first staff begins with a treble clef, a key signature of one sharp (F#), and a 2/4 time signature. The melody uses quarter notes and includes trills (tr) and a sharp sign (#) over a note. The second staff continues with trills and quarter notes.

IV. 185. Suckeys Delight

Three staves of musical notation for 'Suckeys Delight'. The first staff begins with a treble clef, a key signature of one sharp (F#), and a 6/8 time signature. The melody is composed of eighth and sixteenth notes. The second and third staves continue the piece with similar rhythmic patterns and include some slurs.

IV. 186. Miss Dollands Delight



IV. 187. The Prince of Brunswick



IV. 188. Miss Piggotts Whim



IV. 189. Jack in the Box



IV. 190. The Arcadian Nuptials *



* see III. 195.

IV. 191. The Romps, or The Merry Girls of Scarborough

IV. 192. Miss Willmot's Maggot

IV. 193. Jockey to the Fair.

IV. 194. Nottingham Races.

IV. 195. The Soldier's Joy.

IV. 196. Juniper Hill.

Two staves of musical notation for 'Juniper Hill'. The first staff is the melody in 6/8 time, key of D major. The second staff is a second part or accompaniment.

IV. 197. Push about the Jorum.

Three staves of musical notation for 'Push about the Jorum'. The first staff is the melody in 2/4 time, key of D major. The second and third staves are accompaniment.

IV. 198. When Wars alarms.

Three staves of musical notation for 'When Wars alarms'. The first staff is the melody in 2/4 time, key of D major. The second and third staves are accompaniment. A trill (tr) is marked on the final note of the third staff.

IV. 199. The New Feathers.

Three staves of musical notation for 'The New Feathers'. The first staff is the melody in 6/8 time, key of D major. The second and third staves are accompaniment.

IV. 200. The Irish Widow.

Two staves of musical notation for 'The Irish Widow'. The first staff is the melody in 6/8 time, key of D major. The second staff is accompaniment.