

THOMPSON'S Compleat Collection of 200 FAVOURITE COUNTRY DANCES perform'd at
Court, Bath, Tunbridge & all Public Assemblies with proper Figures or Directions to each Tune
set for the Violin, German-Flute, & Hautboy. Pr. 3s. 6d.

VOLUME III.

transcribed & edited by
Fynn Titford-Mock, 2006-9

III. 1. The General

Musical notation for 'The General', consisting of two staves. The first staff begins with a treble clef, a key signature of three sharps (F#, C#, G#), and a 6/8 time signature. The melody is written in a single line. The second staff continues the melody, also in a single line. The piece concludes with a double bar line and repeat dots.

III. 2. Slingsbys Reel

Musical notation for 'Slingsbys Reel', consisting of two staves. The first staff begins with a treble clef, a key signature of three sharps (F#, C#, G#), and a common time signature. The melody is written in a single line. The second staff continues the melody, also in a single line. The piece concludes with a double bar line and repeat dots.

III. 3. The Defiance

Musical notation for 'The Defiance', consisting of two staves. The first staff begins with a treble clef, a key signature of two flats (Bb, Eb), and a 6/8 time signature. The melody is written in a single line. The second staff continues the melody, also in a single line. The piece concludes with a double bar line and repeat dots.

III. 4. The Surprize

Musical notation for 'The Surprize', consisting of two staves. The first staff begins with a treble clef, a key signature of three sharps (F#, C#, G#), and a common time signature. The melody is written in a single line, featuring a trill (tr) on the second measure. The second staff continues the melody, also in a single line. The piece concludes with a double bar line and repeat dots.

III. 5. Charters Reel

Musical notation for 'Charters Reel', consisting of three staves. The first staff begins with a treble clef, a key signature of three sharps (F#, C#, G#), and a common time signature. The melody is written in a single line. The second and third staves continue the melody, also in a single line. The piece concludes with a double bar line and repeat dots.

III. 6. Tringhams Fancy, or Recruiting Serjeant.

III. 7. The Cross Hands

III. 8. The Macaroni

III. 9. Brandford Hunt

III. 10. The Fairy Prince

III. 11. Miss Meynells Reel

Musical score for Miss Meynells Reel, consisting of four staves. The first staff is the main melody in treble clef, key of D major, and 2/4 time. The second staff is labeled 'Ger. Flute' and contains a flute accompaniment. The third and fourth staves provide further accompaniment or alternative parts for the piece.

III. 12. The Wood House

Musical score for The Wood House, consisting of two staves. The first staff is the main melody in treble clef, key of D major, and 6/8 time. The second staff provides a complementary accompaniment.

III. 13. It's Well it's no Worse

Musical score for It's Well it's no Worse, consisting of two staves. The first staff is the main melody in treble clef, key of D major, and 2/4 time. The second staff provides a complementary accompaniment.

III. 14. Charlotte Mc.Carthy

Musical score for Charlotte Mc.Carthy, consisting of two staves. The first staff is the main melody in treble clef, key of D major, and 6/8 time. The second staff provides a complementary accompaniment.

III. 15. The Sun Beams

Musical score for The Sun Beams, consisting of two staves. The first staff is the main melody in treble clef, key of D major, and 2/4 time. The second staff provides a complementary accompaniment.

III. 16. Saw you my Father

Musical notation for 'Saw you my Father' in G major, 2/4 time. The piece consists of two staves. The first staff begins with a treble clef, a key signature of one sharp (F#), and a 2/4 time signature. The melody features several trills (tr) in the second and third measures. The second staff continues the melody and ends with a repeat sign and a fermata.

III. 17. Smarts Fancy

Musical notation for 'Smarts Fancy' in B-flat major, 2/4 time. The piece consists of four staves. The first staff begins with a treble clef, a key signature of two flats (Bb, Eb), and a 2/4 time signature. The melody is characterized by many slurs and eighth-note patterns. The fourth staff ends with a repeat sign, a fermata, and the instruction 'D.C.' (Da Capo).

III. 18. The Obelisk

Musical notation for 'The Obelisk' in B-flat major, common time (C). The piece consists of two staves. The first staff begins with a treble clef, a key signature of two flats (Bb, Eb), and a common time signature. The melody is a simple, steady eighth-note pattern. The second staff continues the melody and ends with a repeat sign and a fermata.

III. 19. The School for Lovers

Musical notation for 'The School for Lovers' in G major, 6/8 time. The piece consists of three staves. The first staff begins with a treble clef, a key signature of one sharp (F#), and a 6/8 time signature. The melody features a mix of eighth and sixteenth notes. The second and third staves continue the melody and end with repeat signs and fermatas.

III. 20. The Harpers Frolic

Musical notation for 'The Harpers Frolic' in G major, 2/4 time. The piece consists of two staves. The first staff begins with a treble clef, a key signature of one sharp (F#), and a 2/4 time signature. The melody is a simple eighth-note pattern. The second staff continues the melody and ends with a repeat sign and a fermata.

III. 21. Berkeley Castle

Musical notation for Berkeley Castle, consisting of three staves of music in treble clef, key of D major, and common time. The first staff contains the first line of the melody. The second staff contains the second line, ending with a repeat sign. The third staff contains the third line, also ending with a repeat sign.

III. 22. The Eclipse

Musical notation for The Eclipse, consisting of two staves of music in treble clef, key of D major, and common time. The first staff contains the first line of the melody, featuring a trill (tr) on the final note. The second staff contains the second line, ending with a repeat sign.

III. 23. The Spa Dance

Musical notation for The Spa Dance, consisting of four staves of music in treble clef, key of D major, and common time. The first staff contains the first line of the melody, marked with an asterisk (*). The second staff contains the second line, featuring a series of chords. The third and fourth staves contain the third and fourth lines of the melody, ending with a repeat sign.

III. 24. The Polygon

Musical notation for The Polygon, consisting of two staves of music in treble clef, key of D major, and 6/8 time. The first staff contains the first line of the melody. The second staff contains the second line, ending with a repeat sign.

III. 25. The Highland Wedding

Musical notation for The Highland Wedding, consisting of two staves of music in treble clef, key of D major, and common time. The first staff contains the first line of the melody. The second staff contains the second line, ending with a repeat sign.

III. 26. The Breast Knott



III. 27. Brentford Lasses



III. 28. News from Denmark



III. 29. Europa



III. 30. The Jubilee



III. 31. La Cymbal



D.C.

III. 32. The Pantheon

Two staves of musical notation for 'The Pantheon'. The key signature is two sharps (F# and C#) and the time signature is 2/4. The melody consists of eighth and quarter notes, ending with a double bar line and repeat dots.

III. 33. The German Dance

Three staves of musical notation for 'The German Dance'. The key signature is one sharp (F#) and the time signature is 2/4. The melody features a mix of eighth and quarter notes, with a repeat sign at the end.

III. 34. The Norfolk Freeholders

One staff of musical notation for 'The Norfolk Freeholders'. The key signature is one sharp (F#) and the time signature is 6/8. The melody is primarily composed of eighth notes, ending with a double bar line and repeat dots.

III. 35. The Neapolitan Dance

Five staves of musical notation for 'The Neapolitan Dance'. The key signature is one sharp (F#) and the time signature is 2/4. The melody is highly rhythmic, featuring many sixteenth and eighth notes, with a repeat sign at the end.

III. 36. The sheep sheering

One staff of musical notation for 'The sheep sheering'. The key signature is one sharp (F#) and the time signature is 6/8. The melody consists of eighth and quarter notes, ending with a double bar line and repeat dots.

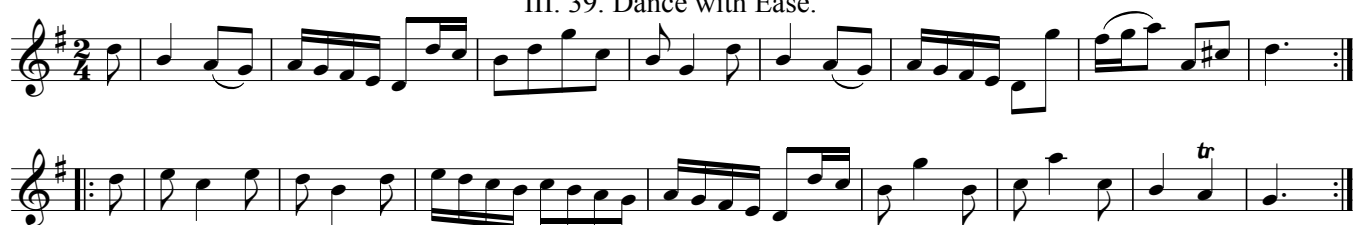
III. 37. Frisky Peggy.

Two staves of musical notation for 'Frisky Peggy'. The key signature is two sharps (F# and C#) and the time signature is 6/8. The melody is composed of eighth notes, ending with a double bar line and repeat dots.

III. 38. The Lyar.



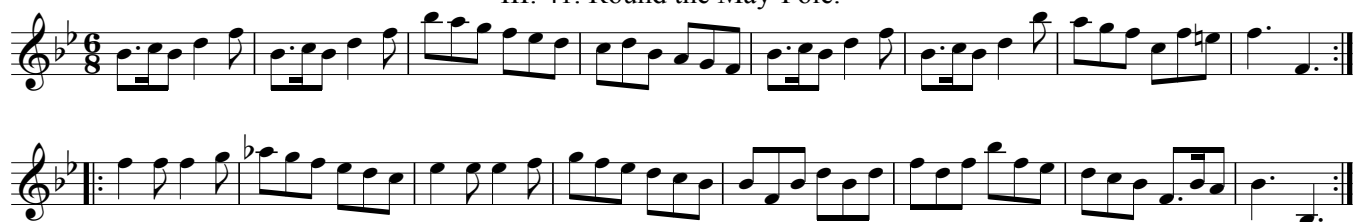
III. 39. Dance with Ease.



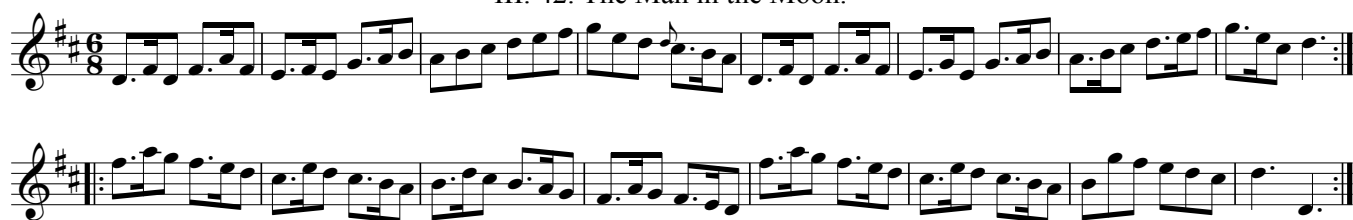
III. 40. The Christening.



III. 41. Round the May-Pole.



III. 42. The Man in the Moon.



III. 43. Cherry and Merry.



III. 44. Light and Airy.

III. 45. Take me Right.

III. 46. Bourton Assembly.

III. 47. The New Ministry.

III. 48. The Boy in the Basket.

III. 49. The Midnight Ramble.

III. 50. The Blind Fidler, or more Noise than Work.

Musical notation for III. 50. The Blind Fidler, or more Noise than Work. The piece is in 6/4 time with a 3/2 section. It features a melody with several trills (tr) and a repeat sign.

III. 51. Asgill's Rant

Musical notation for III. 51. Asgill's Rant. The piece is in 6/8 time with a key signature of one sharp (F#). It features a melody with a trill (tr) and a repeat sign.

III. 52. Miss Dawes's Delight

Musical notation for III. 52. Miss Dawes's Delight. The piece is in 2/4 time with a key signature of one sharp (F#). It features a melody with several trills (tr) and a repeat sign.

III. 53. Jack I'll Tickle thee.

Musical notation for III. 53. Jack I'll Tickle thee. The piece is in 6/8 time with a key signature of one sharp (F#). It features a melody with a repeat sign.

III. 54. The Favourite

Musical notation for III. 54. The Favourite. The piece is in 6/8 time with a key signature of two sharps (F# and C#). It features a melody with a repeat sign.

III. 55. The Bucks Phaeton or A Trip to Windsor

Musical notation for III. 55. The Bucks Phaeton or A Trip to Windsor. The piece is in 2/4 time with a key signature of one flat (Bb). It features a melody with several trills (tr) and a repeat sign.

III. 56. We are gayly yet

Two staves of music in G major and 2/4 time. The first staff contains the first measure with a trill (tr) over the second note. The second staff contains the second measure with trills over the first and second notes.

III. 57. Outs and Inn's.

Two staves of music in G major and 2/4 time. The first staff contains the first measure with a triplet of eighth notes. The second staff contains the second measure with a triplet of eighth notes.

III. 58. Hunt the Whistle.

Two staves of music in G major and 3/8 time. The first staff contains the first measure with a sharp sign over the second note. The second staff contains the second measure with a sharp sign over the second note.

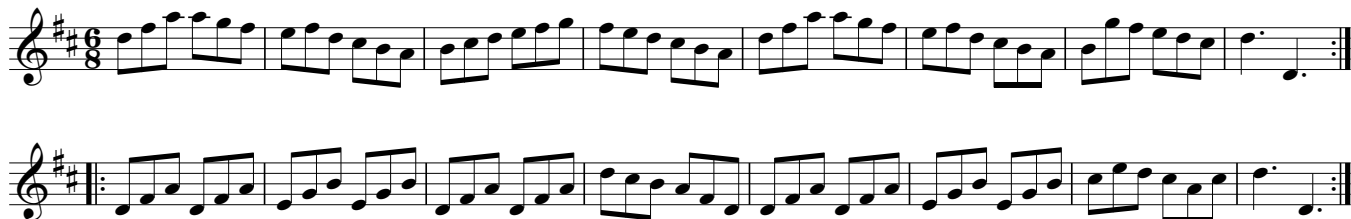
III. 59. The Apron my Dear

Two staves of music in G major and 2/4 time. The first staff contains the first measure with a trill (tr) over the second note. The second staff contains the second measure with a trill (tr) over the second note.

III. 60. Mad Cap

Three staves of music in G major and 2/4 time. The first staff contains the first measure with a trill (tr) over the second note. The second staff contains the second measure with a trill (tr) over the second note. The third staff contains the third measure with a trill (tr) over the second note.

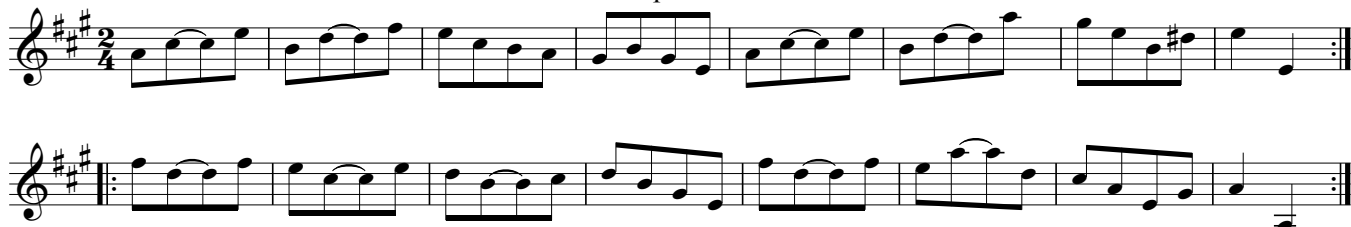
III. 61. Burford Races.



III. 62. The Post Coach.



III. 63. Up the Water.



III. 64. Prince Ferdinand.



III. 65. Bathing Machine.



III. 66. What you will.



III. 67. Croydon Frisk.

Two staves of music for 'Croydon Frisk'. The first staff begins with a treble clef, a key signature of one sharp (F#), and a 2/4 time signature. The melody consists of eighth and sixteenth notes, with a repeat sign at the end of the first line. The second staff continues the melody with similar rhythmic patterns.

III. 68. Miss Baker.

Two staves of music for 'Miss Baker'. The first staff begins with a treble clef, a key signature of one flat (Bb), and a common time signature (C). The melody features eighth notes and includes a triplet of eighth notes. The second staff continues the piece, also featuring triplet markings.

III. 69. A Trip to Flanders.

Two staves of music for 'A Trip to Flanders'. The first staff begins with a treble clef, a key signature of one sharp (F#), and a 2/4 time signature. The melody is composed of eighth and sixteenth notes. The second staff continues the melody, ending with a repeat sign.

III. 70. Leominster Assembly.

Two staves of music for 'Leominster Assembly'. The first staff begins with a treble clef, a key signature of two sharps (F# and C#), and a 2/4 time signature. The melody includes several triplet markings over eighth notes. The second staff continues the piece with similar rhythmic patterns.

III. 71. A Trip to Kew.

Two staves of music for 'A Trip to Kew'. The first staff begins with a treble clef, a key signature of two sharps (F# and C#), and a 6/8 time signature. The melody consists of eighth and sixteenth notes. The second staff continues the melody, ending with a repeat sign.

III. 72. The Magick Lantern.

Musical notation for 'The Magick Lantern' in 6/8 time, key of D major. It consists of two staves of music. The first staff begins with a treble clef, a key signature of two sharps (F# and C#), and a 6/8 time signature. The melody is composed of eighth and sixteenth notes. The second staff continues the melody and includes a repeat sign at the end.

III. 73. The Ladies Play Thing.

Musical notation for 'The Ladies Play Thing' in 6/8 time, key of D major. It consists of three staves of music. The first staff begins with a treble clef, a key signature of two sharps, and a 6/8 time signature. The melody features eighth and sixteenth notes. The second and third staves continue the piece, with the third staff ending with a repeat sign.

III. 74. Jacks Whim.

Musical notation for 'Jacks Whim' in 2/4 time, key of D major. It consists of a single staff of music. The time signature is 2/4, and the key signature has two sharps. The melody is primarily composed of eighth and sixteenth notes.

III. 75. Jockeys Delight.

Musical notation for 'Jockeys Delight' in 6/8 time, key of B minor. It consists of three staves of music. The first staff begins with a treble clef, a key signature of two flats (Bb and Eb), and a 6/8 time signature. The melody includes a trill (tr) over a note. The second and third staves continue the piece, with the third staff ending with a repeat sign.

III. 76. Miss Ottoes Reel.

Musical notation for 'Miss Ottoes Reel' in 6/8 time, key of D major. It consists of three staves of music. The first staff begins with a treble clef, a key signature of two sharps, and a 6/8 time signature. The melody is composed of eighth and sixteenth notes. The second and third staves continue the piece, with the third staff ending with a repeat sign.

III. 77. The New Pavement.

Musical notation for 'The New Pavement' in 6/8 time, key of D major. It consists of two staves of music. The first staff begins with a treble clef, a key signature of two sharps, and a 6/8 time signature. The melody is composed of eighth and sixteenth notes. The second staff continues the piece and ends with a repeat sign.

III. 78. Spadill

Two staves of musical notation for 'Spadill'. The first staff is in 2/4 time with a key signature of one flat (Bb). It features a melody with several triplet markings (indicated by a '3' above the notes). The second staff continues the melody with more triplet markings and ends with a double bar line and repeat dots.

III. 79. Pretty Bettsey.

Two staves of musical notation for 'Pretty Bettsey'. The first staff is in 6/8 time with a key signature of one flat (Bb). It features a melody with a trill (tr) at the end. The second staff continues the melody and ends with a double bar line and repeat dots.

III. 80. Now or Never.

Two staves of musical notation for 'Now or Never'. The first staff is in 2/4 time with a key signature of two sharps (F# and C#). It features a melody with a trill (tr) at the end. The second staff continues the melody and ends with a double bar line and repeat dots.

III. 81. Sallys Favourite.

Two staves of musical notation for 'Sallys Favourite'. The first staff is in 2/4 time with a key signature of one flat (Bb). It features a melody with a trill (tr) at the end. The second staff continues the melody and ends with a double bar line and repeat dots.

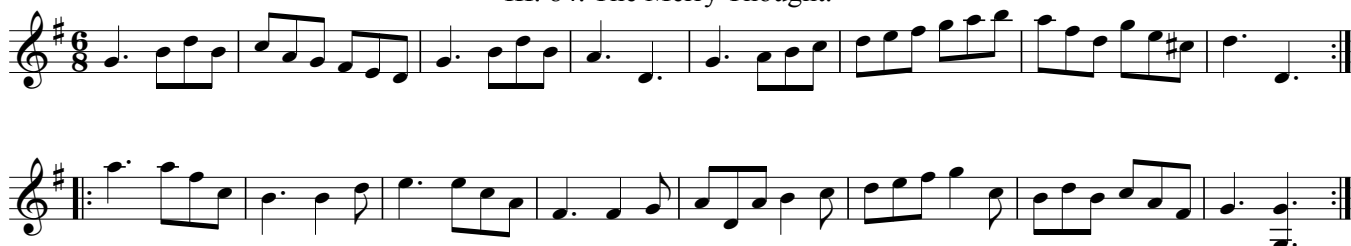
III. 82. All's Well.

Two staves of musical notation for 'All's Well'. The first staff is in 2/4 time with a key signature of two sharps (F# and C#). It features a melody with a trill (tr) at the end. The second staff continues the melody and ends with a double bar line and repeat dots.

III. 83. Margate Rout.

Two staves of musical notation for 'Margate Rout'. The first staff is in common time (C) with a key signature of one flat (Bb). It features a melody with a trill (tr) at the end. The second staff continues the melody and ends with a double bar line and repeat dots.

III. 84. The Merry Thought.



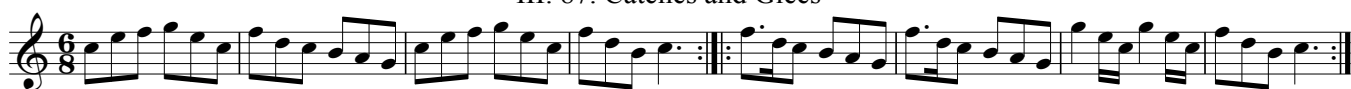
III. 85. Bonny Kate of Aberdeen.



III. 86. The Humours of Wapping.



III. 87. Catches and Glee



III. 88. St. Georges Fields *



* see 155. The Installation

III. 89. The Scotch Ramble.

Two staves of musical notation for 'The Scotch Ramble'. The first staff is in 6/8 time and the second is in 3/4 time. Both are in the key of D major. The piece consists of two measures, each with a repeat sign at the end.

III. 90. Trip to Paris.

Two staves of musical notation for 'Trip to Paris'. Both staves are in 2/4 time and the key of D major. The piece consists of two measures, each with a repeat sign at the end.

III. 91. The Infant

Two staves of musical notation for 'The Infant'. Both staves are in 2/4 time and the key of D major. The piece consists of two measures, each with a repeat sign at the end.

III. 92. The Rocket

Two staves of musical notation for 'The Rocket'. Both staves are in 2/4 time and the key of D major. The piece consists of two measures, each with a repeat sign at the end.

III. 93. You be Welcome here again.

Two staves of musical notation for 'You be Welcome here again.'. Both staves are in 2/4 time and the key of D major. The piece consists of two measures, each with a repeat sign at the end.

III. 94. Salvilettina.

Two staves of musical notation for 'Salvilettina'. The first staff is in 2/4 time and the second is in 3/4 time. Both are in the key of D major. The piece consists of two measures, each with a repeat sign at the end.

III. 95. The Devil among the Taylors

Musical notation for 'The Devil among the Taylors' in 6/8 time, key of D major. The piece consists of two staves. The first staff contains the main melody, and the second staff contains a rhythmic accompaniment. The melody is characterized by eighth-note patterns and a final cadence.

III. 96. Wilke's Fancy

Musical notation for 'Wilke's Fancy' in 6/8 time, key of D major. The piece consists of two staves. The first staff contains the main melody, and the second staff contains a rhythmic accompaniment. The melody features a mix of quarter and eighth notes, ending with a double bar line.

III. 97. The Trim'd Waiscoat

Musical notation for 'The Trim'd Waiscoat' in 6/8 time, key of B minor. The piece consists of two staves. The first staff contains the main melody, and the second staff contains a rhythmic accompaniment. The melody is composed of eighth notes and quarter notes, concluding with a double bar line.

III. 98. The Kiss

Musical notation for 'The Kiss' in 6/8 time, key of B minor. The piece consists of two staves. The first staff contains the main melody, and the second staff contains a rhythmic accompaniment. The melody includes a triplet of eighth notes and ends with a double bar line.

III. 99. Maria's Frolick

Musical notation for 'Maria's Frolick' in 6/8 time, key of D major. The piece consists of two staves. The first staff contains the main melody, and the second staff contains a rhythmic accompaniment. The melody is primarily composed of eighth notes and quarter notes, ending with a double bar line.

III. 100. Hunt the Hare

Musical notation for 'Hunt the Hare' in G major, 2/4 time. The first staff is the melody, and the second staff is the accompaniment. The piece consists of two measures.

III. 101. The Goose and Gridiron.

Musical notation for 'The Goose and Gridiron' in G major, 3/8 time. The first staff is the melody, and the second staff is the accompaniment. The piece consists of two measures.

III. 102. Lord Spindle.

Musical notation for 'Lord Spindle' in G major, 2/4 time. The first staff is the melody, and the second staff is the accompaniment. The piece consists of two measures.

III. 103. Trap Ball

Musical notation for 'Trap Ball' in G major, 2/4 time. The first staff is the melody, featuring trills (tr) on the first and third notes of the first measure. The second staff is the accompaniment. The piece consists of two measures.

III. 104. The Oddity

Musical notation for 'The Oddity' in G major, 2/4 time. The first staff is the melody, and the second and third staves are the accompaniment. The piece consists of two measures.

III. 105. The Pilgrim

Musical notation for 'The Pilgrim' in G major, 3/8 time. The first staff is the melody, and the second staff is the accompaniment. The piece consists of two measures.

III. 106. Nancy Plym



III. 107. Maryann's Fancy



III. 108. The Mowers



III. 109. Ridotto al Fresco



III. 110. The Millers Daughter



III. 111. Lovely Kate

Musical notation for 'Lovely Kate' in C major, 2/4 time. The piece consists of two staves. The first staff contains the first two measures, followed by a repeat sign. The second staff contains the next two measures, also ending with a repeat sign.

III. 112. Stratford Jubilee

Musical notation for 'Stratford Jubilee' in D major, 3/8 time. The piece consists of two staves. The first staff contains the first two measures, followed by a repeat sign. The second staff contains the next two measures, also ending with a repeat sign.

III. 113. La Ballet Hollandoise

Musical notation for 'La Ballet Hollandoise' in D major, 6/8 time. The piece consists of three staves. The first staff contains the first two measures, followed by a repeat sign. The second staff contains the next two measures, also ending with a repeat sign. The third staff contains the final two measures, ending with a repeat sign.

III. 114. The Padlock

Musical notation for 'The Padlock' in D major, 2/4 time. The piece consists of two staves. The first staff contains the first two measures, followed by a repeat sign. The second staff contains the next two measures, also ending with a repeat sign.

III. 115. Take me Jenny

Musical notation for 'Take me Jenny' in D major, 2/4 time. The piece consists of two staves. The first staff contains the first two measures, followed by a repeat sign. The second staff contains the next two measures, also ending with a repeat sign.

III. 116. Trip to Weymouth

Musical notation for 'Trip to Weymouth' in 6/8 time, key of B-flat major. The piece consists of two staves. The first staff contains the main melody, and the second staff contains a variation with trills (tr) on the first and third measures.

III. 117. Plymouth Assembly

Musical notation for 'Plymouth Assembly' in common time, key of D major. The piece consists of three staves. The first staff is the main melody. The second staff is for 'Ger. Flute' and 'Vio.' (Violin), featuring a complex rhythmic accompaniment. The third staff is a variation of the main melody.

III. 118. The Wild Irishman

Musical notation for 'The Wild Irishman' in 6/8 time, key of D major. The piece consists of two staves. The first staff is the main melody, and the second staff is a variation.

III. 119. The Bill of Rights

Musical notation for 'The Bill of Rights' in 6/8 time, key of D major. The piece consists of three staves. The first staff is the main melody, the second staff is a variation, and the third staff is a further variation.

III. 120. Odiham Races

Musical notation for 'Odiham Races' in common time, key of D major. The piece consists of two staves. The first staff is the main melody, and the second staff is a variation.

III. 121. Sweet Richard

Two staves of musical notation for 'Sweet Richard'. The first staff is in treble clef with a key signature of one sharp (F#) and a common time signature (C). The second staff is in treble clef with a key signature of one sharp (F#). The music consists of a series of eighth and sixteenth notes, with some rests and a repeat sign at the end of the first staff.

III. 122. Ride a Mile

Two staves of musical notation for 'Ride a Mile'. The first staff is in treble clef with a key signature of one sharp (F#) and a 3/8 time signature. The second staff is in treble clef with a key signature of one sharp (F#). The music consists of a series of eighth and sixteenth notes, with some rests and a repeat sign at the end of the first staff.

III. 123. Rose Hill.

Two staves of musical notation for 'Rose Hill'. The first staff is in treble clef with a key signature of two sharps (F# and C#) and a 3/8 time signature. The second staff is in treble clef with a key signature of two sharps (F# and C#). The music consists of a series of eighth and sixteenth notes, with some rests and a repeat sign at the end of the first staff.

III. 124. The Farm House.

Two staves of musical notation for 'The Farm House'. The first staff is in treble clef with a key signature of one flat (Bb) and a 3/8 time signature. The second staff is in treble clef with a key signature of one flat (Bb). The music consists of a series of eighth and sixteenth notes, with some rests and a repeat sign at the end of the first staff.

III. 125. Warwickshire Will.

Two staves of musical notation for 'Warwickshire Will'. The first staff is in treble clef with a key signature of two flats (Bb and Eb) and a common time signature (C). The second staff is in treble clef with a key signature of two flats (Bb and Eb). The music consists of a series of eighth and sixteenth notes, with some rests and a repeat sign at the end of the first staff. A trill (tr) is indicated above a note in the second staff.

III. 126. Cullodon Fight.

Two staves of musical notation for 'Cullodon Fight'. The first staff is in treble clef with a key signature of one sharp (F#) and a 3/8 time signature. The second staff is in treble clef with a key signature of one sharp (F#). The music consists of a series of eighth and sixteenth notes, with some rests and a repeat sign at the end of the first staff.

III. 127. The 18th. of April.



III. 128. Cupids Frolic.



III. 129. A trip to Dunsburn.



III. 130. Miss Fargiharsons Reel.



III. 131. Warwick Court.



III. 132. The Jovial Fellow.



III. 133. The North Country Lass (1770)

Musical notation for 'The North Country Lass' (1770). The piece is in 6/8 time and G major. It consists of two staves of music. The first staff begins with a treble clef, a key signature of one sharp (F#), and a 6/8 time signature. The melody is written in a single line. The second staff continues the melody and includes a repeat sign at the end.

III. 134. Cap. Lucas's Fancy

Musical notation for 'Cap. Lucas's Fancy'. The piece is in 2/4 time and G major. It consists of two staves of music. The first staff begins with a treble clef, a key signature of one sharp (F#), and a 2/4 time signature. The melody is written in a single line. The second staff continues the melody and includes a repeat sign at the end.

III. 135. Sr. Alexr Mc.Donald's Reel

Musical notation for 'Sr. Alexr Mc.Donald's Reel'. The piece is in 2/4 time and G major. It consists of three staves of music. The first staff begins with a treble clef, a key signature of one sharp (F#), and a 2/4 time signature. The melody is written in a single line. The second and third staves continue the melody and include repeat signs at the end.

III. 136. The Ramble

Musical notation for 'The Ramble'. The piece is in 6/8 time and G major. It consists of two staves of music. The first staff begins with a treble clef, a key signature of one sharp (F#), and a 6/8 time signature. The melody is written in a single line. The second staff continues the melody and includes a repeat sign at the end.

III. 137. The Mistakey

Musical notation for 'The Mistakey'. The piece is in 6/8 time and G major. It consists of three staves of music. The first staff begins with a treble clef, a key signature of one sharp (F#), and a 6/8 time signature. The melody is written in a single line. The second and third staves continue the melody and include repeat signs at the end.

III. 138. Peggy Band

Musical notation for 'Peggy Band'. The piece is in 6/8 time and G major. It consists of two staves of music. The first staff begins with a treble clef, a key signature of one sharp (F#), and a 6/8 time signature. The melody is written in a single line. The second staff continues the melody and includes a repeat sign at the end. A trill (tr) is indicated above a note in the first staff.

III. 139. Grants Rant

Two staves of music for 'Grants Rant'. The first staff begins with a treble clef, a key signature of one sharp (F#), and a common time signature (C). The melody consists of eighth and quarter notes. The second staff continues the melody, featuring a repeat sign with first and second endings.

III. 140. The Black Dance

Two staves of music for 'The Black Dance'. The first staff has a treble clef, a key signature of one sharp (F#), and a 2/4 time signature. The melody is characterized by sixteenth-note patterns. The second staff continues the piece with similar rhythmic patterns.

III. 141. Bow Bells

Two staves of music for 'Bow Bells'. The first staff has a treble clef, a key signature of one sharp (F#), and a 6/8 time signature. The melody features a mix of eighth and quarter notes. The second staff continues the melody with a repeat sign.

III. 142. The Brave Corsicans

Two staves of music for 'The Brave Corsicans'. The first staff has a treble clef, a key signature of two sharps (F# and C#), and a 6/8 time signature. It includes a 'G.F.' (Grave Face) marking above a section of the melody. The second staff continues the piece with a 'V.' (Vivace) marking below a section.

III. 143. The Fox in the Dumps

Two staves of music for 'The Fox in the Dumps'. The first staff has a treble clef, a key signature of one flat (Bb), and a common time signature (C). The melody is primarily composed of eighth notes. The second staff includes trill ornaments, indicated by 'tr' above the notes.

III. 144. The Middlesex Farmer

Two staves of music for 'The Middlesex Farmer'. The first staff has a treble clef, a key signature of one sharp (F#), and a common time signature (C). The melody consists of eighth and quarter notes. The second staff continues the melody with a repeat sign.

III. 145. The Rattle

Two staves of musical notation for 'The Rattle'. The first staff begins with a treble clef, a key signature of one sharp (F#), and a 6/8 time signature. The melody consists of eighth and sixteenth notes. The second staff continues the melody with similar rhythmic patterns.

III. 146. The Round about

Two staves of musical notation for 'The Round about'. The first staff begins with a treble clef, a key signature of two sharps (F# and C#), and a common time signature. The melody features a mix of quarter and eighth notes. The second staff continues the piece with similar rhythmic patterns.

III. 147. Windsor Terrace

Two staves of musical notation for 'Windsor Terrace'. The first staff begins with a treble clef, a key signature of three sharps (F#, C#, and G#), and a 6/8 time signature. The melody is composed of eighth and sixteenth notes. The second staff continues the melody with similar rhythmic patterns.

III. 148. Knights of the Garter

Two staves of musical notation for 'Knights of the Garter'. The first staff begins with a treble clef, a key signature of one sharp (F#), and a 2/4 time signature. The melody features a mix of quarter and eighth notes. The second staff continues the piece with similar rhythmic patterns.

III. 149. Aldridge's Rant

Three staves of musical notation for 'Aldridge's Rant'. The first staff begins with a treble clef, a key signature of two sharps (F# and C#), and a common time signature. The melody is composed of eighth and sixteenth notes. The second and third staves continue the piece with similar rhythmic patterns.

III. 150. The London Assembly

Two staves of musical notation for 'The London Assembly'. The first staff begins with a treble clef, a key signature of two flats (Bb and Eb), and a common time signature. The melody features a mix of quarter and eighth notes. The second staff continues the piece with similar rhythmic patterns.

III. 151. La Tonva

Musical score for III. 151. La Tonva, featuring four staves of music in 2/4 time with a key signature of one sharp (F#).

III. 152. Portsmouth Harbour

Musical score for III. 152. Portsmouth Harbour, featuring two staves of music in common time (C) with a key signature of one sharp (F#).

III. 153. Brighthelmstone Hot Bath

Musical score for III. 153. Brighthelmstone Hot Bath, featuring two staves of music in 6/8 time with a key signature of two sharps (F# and C#).

III. 154. Charles Street Walk

Musical score for III. 154. Charles Street Walk, featuring two staves of music in common time (C) with a key signature of three sharps (F#, C#, and G#).

III. 155. The Installation *

Musical score for III. 155. The Installation, featuring four staves of music in 6/8 time with a key signature of two flats (Bb and Eb).

* see III. 88. St. Georges Fields

III. 156. The Bells of Osley



III. 157. The Faithfull Shepherd



III. 158. The King of Denmark's Favourite



III. 159. The Trifle



III. 160. Cap. Coopers Ramble



III. 161. Trip to Ankerwick



III. 162. Petro's Fancy



III.163. The Turtle *



* see II. 109. Bonny Kitty

III. 164. Miss Poultney's Delight



III. 165. The Playhouse Squabble.



III. 166. The Happy Friends



III. 167. The Half Moon



III. 168. Mrs. Boyce's Delight

Musical notation for Mrs. Boyce's Delight, consisting of two staves in 2/4 time with a key signature of one sharp (F#). The first staff contains the main melody, and the second staff contains a rhythmic accompaniment.

III. 169. The Coffee House

Musical notation for The Coffee House, consisting of two staves in 2/4 time with a key signature of one sharp (F#). The first staff contains the main melody, and the second staff contains a rhythmic accompaniment.

III. 170. Negus

Musical notation for Negus, consisting of two staves in 6/8 time with a key signature of one sharp (F#). The first staff contains the main melody, and the second staff contains a rhythmic accompaniment.

III. 171. Morgans Whim.

Musical notation for Morgans Whim, consisting of two staves in 6/8 time with a key signature of three sharps (F#, C#, G#). The first staff contains the main melody with trills (tr) indicated above several notes. The second staff contains a rhythmic accompaniment.

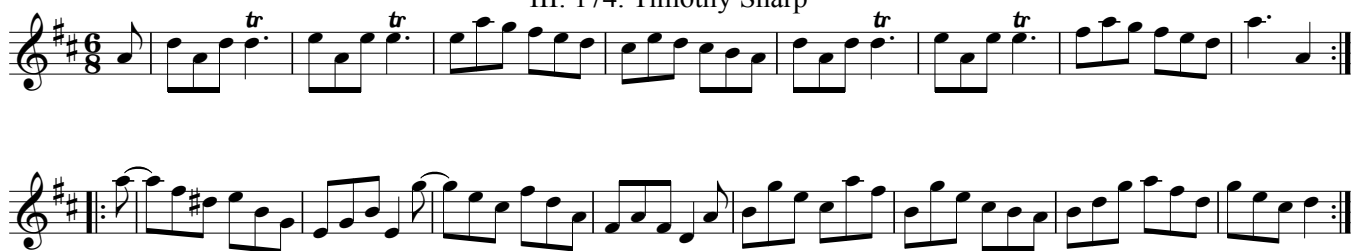
III. 172. Trip to Strasbourg

Musical notation for Trip to Strasbourg, consisting of two staves in 2/4 time with a key signature of three sharps (F#, C#, G#). The first staff contains the main melody with a trill (tr) indicated above a note. The second staff contains a rhythmic accompaniment.

III. 173. The Bird

Musical notation for The Bird, consisting of two staves in 6/8 time with a key signature of three sharps (F#, C#, G#). The first staff contains the main melody, and the second staff contains a rhythmic accompaniment.

III. 174. Timothy Sharp



III. 175. It grieves me much to Pitty thee.



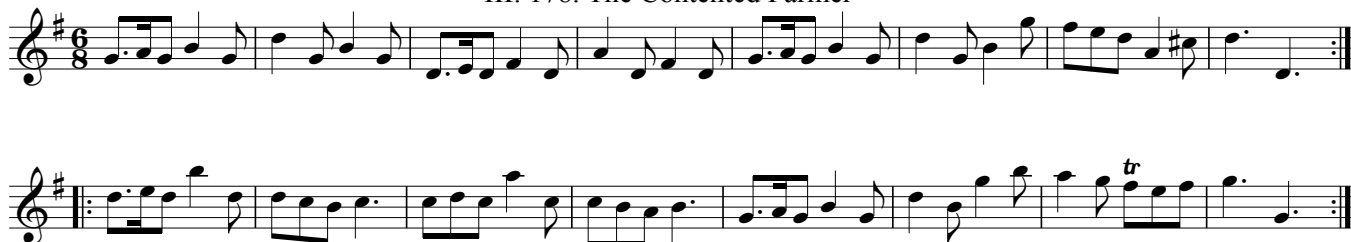
III. 176. The Successfull Campain or Bath Frolick



III. 177. The Nabob



III. 178. The Contented Farmer



III. 179. Lord Baths Gate

Musical notation for 'Lord Baths Gate' in G major, 2/4 time. The piece consists of two staves. The first staff contains the first two measures, followed by a repeat sign. The second staff contains the next two measures, followed by a repeat sign.

III. 180. Sr. Tom in an Office.

Musical notation for 'Sr. Tom in an Office' in G major, 2/4 time. The piece consists of two staves. The first staff contains the first two measures, with triplets and a trill (tr) indicated. The second staff contains the next two measures, also with triplets.

III. 181. Mrs Carey's Bridal Day.

Musical notation for 'Mrs Carey's Bridal Day' in G major, 6/8 time. The piece consists of two staves. The first staff contains the first two measures. The second staff contains the next two measures, with a repeat sign at the end.

III. 182. Mr Sherriffs Whym.

Musical notation for 'Mr Sherriffs Whym' in G major, 2/4 time. The piece consists of two staves. The first staff contains the first two measures. The second staff contains the next two measures, with a repeat sign at the end.

III. 183. The Favourite

Musical notation for 'The Favourite' in G major, 2/4 time. The piece consists of three staves. The first staff contains the first two measures. The second staff contains the next two measures, with a repeat sign. The third staff contains the final two measures.

III. 184. The Whim

Musical notation for 'The Whim' in G major, 2/4 time. The piece consists of two staves. The first staff contains the first two measures. The second staff contains the next two measures, with a repeat sign.

III. 185. Welcome from the Havanna.

Musical notation for 'Welcome from the Havanna' in G major, 2/4 time. The piece consists of three staves of music. The first staff begins with a treble clef, a key signature of one sharp (F#), and a common time signature (C). The melody is written in a single line. The second and third staves continue the melody with similar notation.

the last part once

III. 186. The Surry Reel.

Musical notation for 'The Surry Reel' in G major, 6/8 time. The piece consists of two staves of music. The first staff begins with a treble clef, a key signature of one sharp (F#), and a 6/8 time signature. The melody is written in a single line. The second staff continues the melody with similar notation.

III. 187. Paddy Wack

Musical notation for 'Paddy Wack' in G major, 6/8 time. The piece consists of two staves of music. The first staff begins with a treble clef, a key signature of one sharp (F#), and a 6/8 time signature. The melody is written in a single line. The second staff continues the melody with similar notation.

III. 188. The Hamburg Dance

Musical notation for 'The Hamburg Dance' in G minor, 2/4 time. The piece consists of two staves of music. The first staff begins with a treble clef, a key signature of two flats (Bb, Eb), and a common time signature (C). The melody is written in a single line. The second staff continues the melody with similar notation, including a trill marked with a 'tr' and a 'h' above it.

III. 189. A Trip to Winchcomb.

Musical notation for 'A Trip to Winchcomb' in G major, 2/4 time. The piece consists of two staves of music. The first staff begins with a treble clef, a key signature of one sharp (F#), and a 2/4 time signature. The melody is written in a single line. The second staff continues the melody with similar notation.

III. 190. Shilling A Gig.

Two staves of musical notation for 'Shilling A Gig'. The first staff is in treble clef with a key signature of two sharps (F# and C#) and a 3/8 time signature. It contains two measures of music. The second staff is in treble clef with a key signature of one sharp (F#) and a 3/8 time signature. It contains four measures of music.

III. 191. Vicar & Moses

Two staves of musical notation for 'Vicar & Moses'. The first staff is in treble clef with a key signature of one flat (Bb) and a 6/8 time signature. It contains two measures of music. The second staff is in treble clef with a key signature of one flat (Bb) and a 6/8 time signature. It contains four measures of music.

III. 192. The Maid of Bath

Two staves of musical notation for 'The Maid of Bath'. The first staff is in treble clef with a key signature of two sharps (F# and C#) and a 6/8 time signature. It contains two measures of music. The second staff is in treble clef with a key signature of two sharps (F# and C#) and a 6/8 time signature. It contains four measures of music, with a trill (tr) indicated above the second measure.

III. 193. The Fantocini.

Two staves of musical notation for 'The Fantocini'. The first staff is in treble clef with a key signature of one flat (Bb) and a 6/8 time signature. It contains two measures of music, each with a trill (tr) above the first note. The second staff is in treble clef with a key signature of one flat (Bb) and a 6/8 time signature. It contains four measures of music, with trills (tr) above the first notes of the first and third measures.

III. 194. Marionets.

Two staves of musical notation for 'Marionets'. The first staff is in treble clef with a key signature of one sharp (F#) and a 6/8 time signature. It contains two measures of music. The second staff is in treble clef with a key signature of one sharp (F#) and a 6/8 time signature. It contains four measures of music.

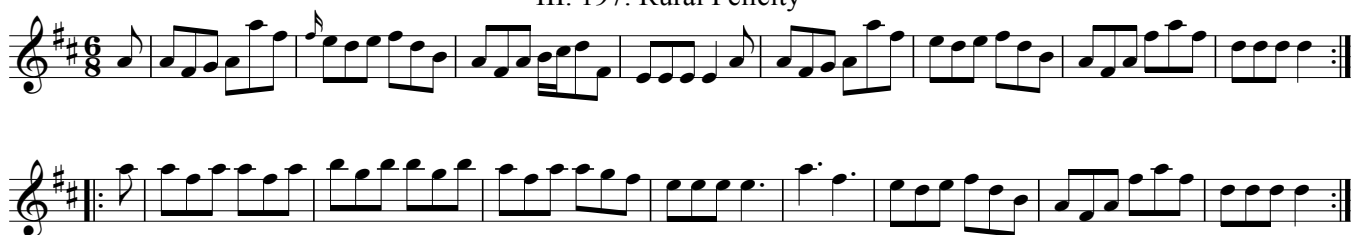
III. 195. The Arcadian Nuptials

Three staves of musical notation for 'The Arcadian Nuptials'. The first staff is in treble clef with a key signature of one flat (Bb) and a 6/8 time signature. It contains two measures of music. The second staff is in treble clef with a key signature of one flat (Bb) and a 6/8 time signature. It contains four measures of music. The third staff is in treble clef with a key signature of one flat (Bb) and a 6/8 time signature. It contains four measures of music.

III. 196. Guildford Assembly



III. 197. Rural Felicity



III. 198. The Russian Dance



III. 199. The Lowdon.



III. 200. Hessian Camp.

